

PCHS&C's UNIQUE SOLUTION

After school clubs are currently provided in 10 week blocks from 3:30pm - 4:45pm three times a week each term. These include team sports, fitness club, art club and DT club. All our after school clubs are organised and delivered by our own staff. A minimal charge is made to parents of £20 for the 10 week block.

Transport is currently provided for those students living within the locality at no additional cost to the families. We would also like to provide individual specialist after school tuition which would cost around £200 per child for a 10 week block.

WHY US? WHY NOW?

PCHSC offer highly trained, specialist staff that understand the strengths and needs of our students. The most physically and cognitively able students can access general after school clubs groups on a 1:4 staffing ratio (depending on their needs). However, the students with the most complex needs are provided with individualised staffing, for which parents are asked to provide an additional contribution, some of which simply cannot afford this.

None of our current parents with children who would be interested in specialist after school tuition could afford to pay the true cost for this.

PCHS&C receives highly positive feedback from parents and pupils in relation to the provision of the clubs currently provided:



CASE STUDY: CHLOE LEAH

"Chloe has attended after school clubs with trained staff who are capable of managing her behaviour and providing Chloe with educational and fun times. These clubs have helped Chloe with positive social interactions and valuable life skills. It is a great relief to know Chloe is included in special events including those outdoors and not singled out due to her behaviour.

Because the staff have such a good understanding of Autism they are better equipped to manage difficult behaviour while still being able to extract hidden talents and help the students to expand them further so they can achieve the very best they are capable of."

– Helen Leah, Parent

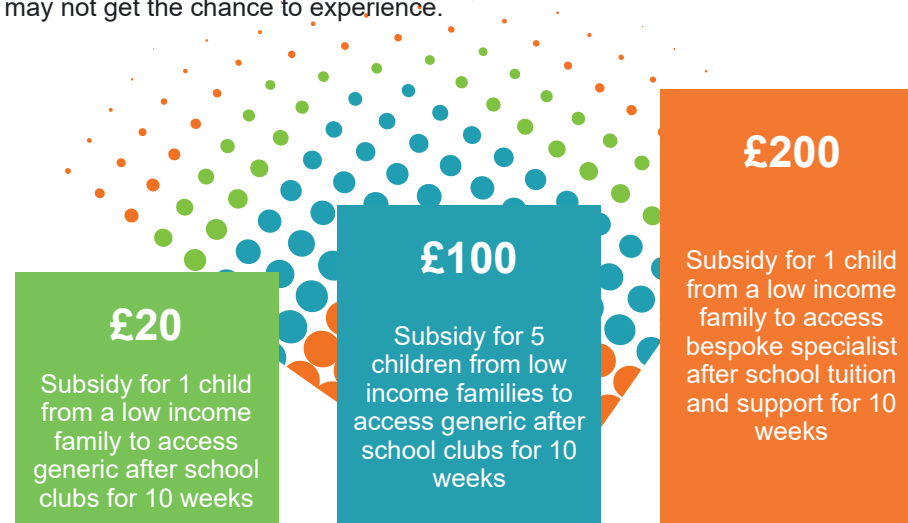
WHAT DO WE NEED?

We currently subsidise our generic after school clubs by around £10,000 per year, and as our school budget gets tighter, we are unable to continue to commit to this after the end of this financial year. We would also like to provide bespoke opportunities to students who would particularly benefit from them. For these things to happen we need:

- Contribution towards generic after school clubs, so these can continue to be provided for the majority of students who access them.
- Support for students with particular skills and interests to access bespoke specialist after school tuition and support in different areas, for example: computer programming, climbing wall and belaying, music, art & drama etc.

HOW YOU CAN HELP

We Can...Charitable Trust are reaching out to our local community to help raise the money needed for PCHS&C to continue providing these incredible experiences. By choosing one of our donation options below, you will be contributing to providing PCHS&C students with opportunities they otherwise may not get the chance to experience.



Please get in touch today using the contact details on the reverse if you would like to pledge your support to this worthwhile cause.



After School Clubs

THE ISSUE
 The majority of our students find it difficult to access any mainstream services outside of school, in which they can pursue their interests within a safe and secure environment. A number of our parents also rely on after school clubs for them to be able to access paid drama etc. However, despite having the ability and willingness to provide individual specialist support as the cost far outweighs the parent's ability to be able to fund this (especially for many of our low income families).

WeCAN
 Charitable Trust

 Oxford Road, Nelson
 Lancashire, BB9 8LF

 01282 682268

 wecan@pchs.lancs.sch.uk

 www.pchs.lancs.sch.uk/we-can



Pendle Community High School and College (PCHS&C) is the only community special learning difficulties, which serves the whole 19 years with general learning difficulties, which serves the whole community of Pendle. We are an OFSTED, outstanding quality provision and we genuinely strive to deliver the highest quality standard possible within our core offer and associated budget.

Students who attend PCHS&C vary in the extent of their learning needs from moderate to severe and more profound and complex difficulties. They generate to severe and additional special educational needs, which can include autism, speech, language and communication needs, multi-sensory impairments and medical needs, visual, hearing and mental health difficulties.

All of our students have an Educational Health & Care Plan, which stipulates that their needs can only be met in a specialist setting, as would be too complex for their local mainstream school.

Case for Support

WeCAN
 Charitable Trust