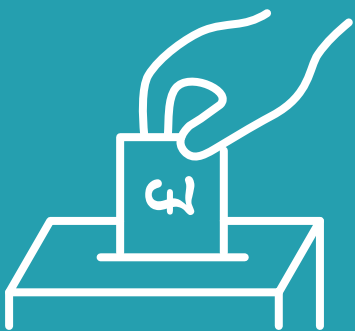


# WeCAN... MAGAZINE



ISSUE 1 OCTOBER 2020

 Oxford Road, Nelson  
Lancashire, BB9 8LF  
 01282 682268  
 [wecan@pchs.lancs.sch.uk](mailto:wecan@pchs.lancs.sch.uk)  
 [www.pchs.lancs.sch.uk/we-can](http://www.pchs.lancs.sch.uk/we-can)



# WELCOME...

...to the first edition of We CAN... magazine! Our charitable trust was established last year and since then we have been working very hard behind the scenes to make sure we have everything in place to make it possible to achieve our aims.

We CAN... Charitable Trust is made up of staff, parents and friends of Pendle Community High School and College. Our aim is to enhance the education and well-being of our children and young people, as well as their families and the wider community. We will support PCHS&C by providing resources, specialist equipment, providing funds for educational events, residential trips, out of school clubs and other enhanced curriculum activities. We also intend to hold events and activities for the whole community to enjoy. This has been placed on hold at the moment due Covid-19 but we are still hoping to host some virtual activities.

As we start to grow, we look forward to building relationships and welcoming support from parents, carers, families, community members and even local businesses. We really do want to make a difference and we need your your help to do so!

Please connect with us via our online platforms and feel free to support us by sharing our posts and getting involved. We hope you enjoy this first edition of We CAN... Magazine!

Together We CAN... make a difference!



## THANK YOU ASDA COLNE

Pendle Community High School & College would like to say a big thank you to ASDA Colne who have generously donated £200 worth of food items and school uniform to help our families during these tough times.

A special thanks also to Diane Springthorpe, Community Champion for arranging this and continuously supporting PCHS&C.





Check out our parent supporter Angela rocking her We CAN... tee!

## WE CAN... STAY SAFE

During lockdown, the stay safe message was very close to all of our hearts. We were keen to do our bit to spread the message alongside showing support for We CAN... by creating our very own Stay Safe t-shirts!

The designs went live online and were shared amongst parents, carers and staff. Thank you to all those of you who bought a t-shirt, it really does mean a lot knowing that we have your support. It always helps when the product is as nice as this! Keep an eye out for any further t-shirt campaigns so you don't miss out next time!



## HALLOWEEN HAMPER GIVEAWAY

In the run up to Halloween we ran a Facebook competition to win this amazing hamper! The aim of the competition was to raise the profile of We CAN... Charitable Trust and connect with more members of our community!

The lucky winner was drawn at random on Friday 23rd October... drum roll please...

Well done **Emma Lou Marsh!**

We hope you enjoy your hamper full of goodies!! We promise it was all treats and no tricks! We would also like to thank The Workshop for making the customised halloween box.

HAPPY HALLOWEEN EVERYONE



wecancharitabletrust



we-can-charitable-trust



@CharityWeCAN

## CONNECT WITH US

to be kept informed of any other promotions and competitions we may be running!



## THANK YOU FOR YOUR DONATION

We CAN... Charitable Trust would like to say a huge thank you to **I AM Claims Consultants Ltd. in Burnley** for their generous donation of £450 toward our Case for Support for Residential Visits.

We Can... wishes to sustain the offer of residential experiences for all students at PCHS&C throughout their education. Up until now, Outward Bound residentials have been offered to more able year 8-9 students each year and a small number of students with the most complex medical and learning disabilities have had access to residentials every other year. These experiences are not funded through the school's core education budget and therefore they are unable to continue to provide these without additional financial means.

This donation of £450 from I AM Claims Consultants could enable 4 children from low income families to access Outward Bound for 3 days **OR** contribute half the cost towards a week long residential for a child with the most complex medical & learning needs with a member of staff **OR** enable one child with the most complex medical & learning needs to access a valuable week long residential opportunity with a member of staff. You can see how much difference each donation makes and we really appreciate every one!



If you wish to get involved and make a donation please get in touch!

# WHAT IS MATCH FUNDING?



We wanted to take this opportunity to inform you about the Match Funding scheme and how you could raise double the funds for We CAN... Charitable Trust.

## WHAT IS IT?

If you work for an organisation that has a match funding policy, any money you raise could be matched by your employer. Companies may match the fundraising total for an event, or for example a stall that their employee is working on. Usually, the employee will need to supply them with a letter from us detailing the date and nature of the event, together with the total raised.

## WHO DOES IT?

We understand that the high street banks, building societies, supermarkets

and large corporations are likely to do match funding, but these schemes are not exclusive to the major corporate giants. If you work for an independent company, they may be interested in charitable giving through match funding too.

## HOW CAN YOU HELP?

If you are aware that your employer has a match funding scheme, why not try to find out if they would be willing to match fund any of our events in the future. This could be a really large source of income for the trust and go towards raising funds for our cases for support.

If you are able to help us this way, please get in touch! Thank you for your support.

# IT'S NOT ALL ABOUT US...



Obviously, we are trying to raise as much money as possible to achieve the aims set out by We CAN... But that doesn't mean we don't help others too!

Last month we raised **£223** for MacMillan by taking part in the world's biggest coffee morning. As we couldn't have visitors in due to restrictions, we held a non-uniform day and students researched the MacMillan Charity and what they do. They held various activities and lots of cake was eaten!



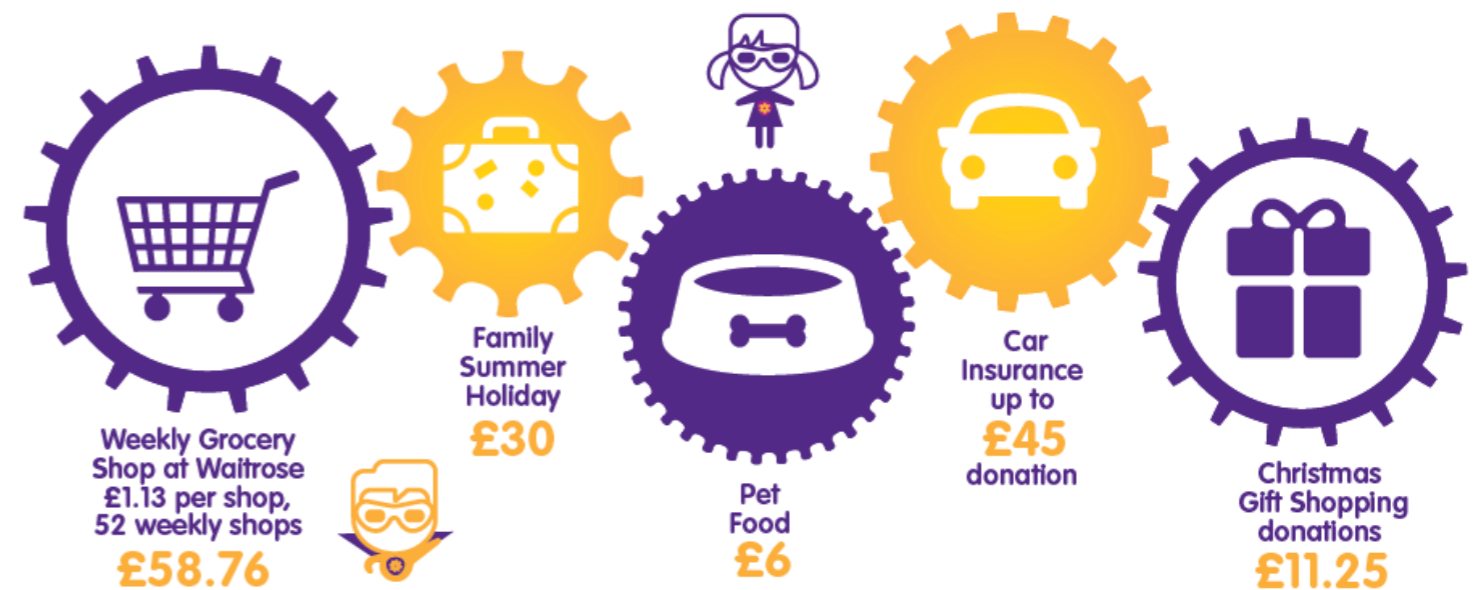
# RAISE FUNDS WHILE DOING YOUR SHOPPING!

You can now find We CAN... Charitable Trust on TheGivingMachine, a great fundraising site that lets you raise donations for We CAN... whenever you shop online! It's easy to use and doesn't cost you (or us) a penny!

TheGivingMachine is a fundraising charity setup to help charitable causes raise money online. By signing up and shopping online via TheGivingMachine you will generate a free cash donation for us. With over 2,200 of your favourite retailers, including Ebay, M&S, Tui, Sainsbury's, Argos and Amazon, you are bound to find what you need and generate a donation.

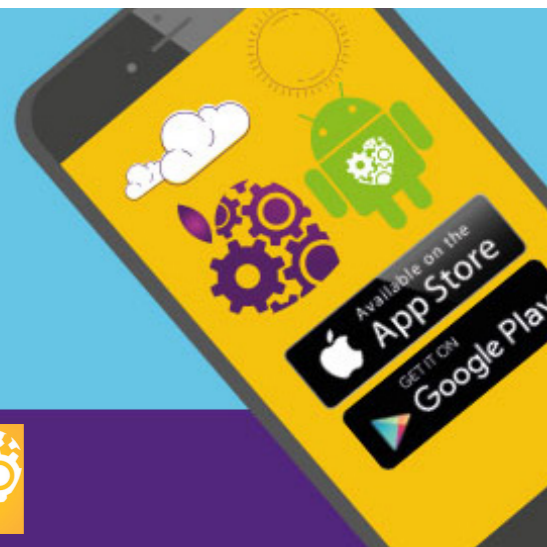
To start raising free donations visit [www.thegivingmachine.co.uk/causes/we-can-charitable-trust](http://www.thegivingmachine.co.uk/causes/we-can-charitable-trust) and join! It really is that easy! Alternatively you can download the app on the Play Store or App Store.

See just how much your online shopping can raise in one year when you shop via [www.thegivingmachine.co.uk](http://www.thegivingmachine.co.uk)



Never miss a donation!  
**Shop&Give** mobile app

Download for FREE



# WE CAN... GET INVOLVED!

# A-Z

*of fundraising ideas...*

If you want to support We CAN... Charitable Trust with **YOUR OWN** fundraiser, there are lots of fun ways you can raise money on our behalf!

<b>A</b>	Afternoon Tea		<b>N</b>	Night time walk
<b>B</b>	Bake Sale		<b>O</b>	Onesie Day
<b>C</b>	Car Wash		<b>P</b>	 Pamper Party
<b>D</b>	Dress down / up day		<b>Q</b>	Quiz Night
<b>E</b>	Eighties Night		<b>R</b>	Raffle
<b>F</b>	Football Tournament		<b>S</b>	Skydive
<b>G</b>	 Games Night		<b>T</b>	Treasure Hunt
<b>H</b>	 Head Shave		<b>U</b>	Used item sale
<b>I</b>	It's a Knockout		<b>V</b>	Variety Show
<b>J</b>	Jumble Sale		<b>W</b>	Walk to work week
<b>K</b>	Karaoke Night		<b>X</b>	X Factor competition
<b>L</b>	Ladies Lunch		<b>Y</b>	Yoyo competition
<b>M</b>	Murder Mystery		<b>Z</b>	Zumbathon

